

Installation Guide

(for Windows7/Windows8/Windows8.1/Windows10)

ATTENTION



- Contact us if there is anything to be corrected and missed.
- This contents may change without prior notice. Contact us for the latest information.
- DO NOT reprint, copy, duplicate or fabricate all this contents or partially without prior consent.
- Be aware that we will not be responsible for the result arising from the usage.
- Be aware that well that we are not responsible for any change arising from I incorrect usage and handling by user on contrary to this description or repaired and modified by the third party.

About Trademark

MS-DOS®, Microsoft®, Win32®, Windows®, Windows Vista®, Visual Studio®, Visual Basic®, Visual C++®, and Visual C#® are registered trademark of Microsoft Corporation in the US and other countries.

About Signage

Following signage are used in this guide. Understanding the meaning of each signage before the product.

 Note	Vital observance in use is described In correct handling against this indication may cause breakdown or operation failure of the product.
 Reference	Supplemental remarks and related matters are described.

Restrictions in use

Use this product with attention to safety design of whole system by fail safety design or redundant design to sustain reliability and safety of whole system in case of being used applications which require for high reliability and safety in function and accuracy such as equipment, disaster prevention and security device directly related to operation of airplane, train, vessel, auto-mobile etc.

This product is not designed for use of aerospace hardware, main communication equipment, atomic control device, medical instrument etc. which require extremely higher reliability and safety. Make sure your decision upon users' enough acknowledgement to adequateness of this product in such applications.

Table of contents

- **Installation Guide**

- [Introduction](#) 4
- [Installation procedure](#) 6
- [Uninstallation procedure](#) 8

Introduction

A user on this document needs administrator rights.



It may be demanded the administrator rights on some procedures.

Restriction

1. In case of serial connection, “??” may be printed when recovered from Sleep or hibernation mode on start-up of OP.
2. Use Windows on mode of [enable detail print function] of printer driver [detail setting] (EMF Spool configuration)
3. Operation is not guaranteed under multi-user environment of Windows.
4. Reserved name of resource
 - Shared memory: Global\??SHMEM/ <printer name> /monitor/status
 - Shared memory: Global\??SHMEM/ <printer name> /log
 - Each printer name is inserted in a part of <printer name> in this name.
5. In case multi-printer drivers are allocated to the same port, the accurate status is not acquired.
6. The driver set up is conducted by a user with the administrator rights.
7. The data may not exist in case the file is opened during output to log file in generated log file.
8. There is a log function of IN/OUT to port, but it does not guarantee input/output.
9. With using 64bit OS, It is necessary to use NPIDelDev.exe for uninstallation of the printer driver, then, stores NPI_UnInstaller.exe and NPIDelDev.exe in the same folder.
10. In serial communication, if printer's power OFF/ON (including software reset) is repeated, it may be judged as OFF line tentatively.
11. Some of configurable items in this driver may not be supported as printer.
12. The Administrator rights is necessary to use NPI_UnInstaller.exe.
13. When printer driver was deleted by “NPI_UnInstaller.exe,” after rebooting, it may become the condition that installed printer driver again. If this problem occurs, delete the device from “devices and printers” and also delete the driver from server properties.
14. Restart PC before reinstalling this driver.
15. Be noted that multiple printers cannot be used with Bluetooth connection or combination of Bluetooth and COM connection.

Confirmation before installation

Prepare as follows before installation.

- If printer is connected
- If printer is connected properly
- preparation of life (decompress if compressed)

1. Installation procedure

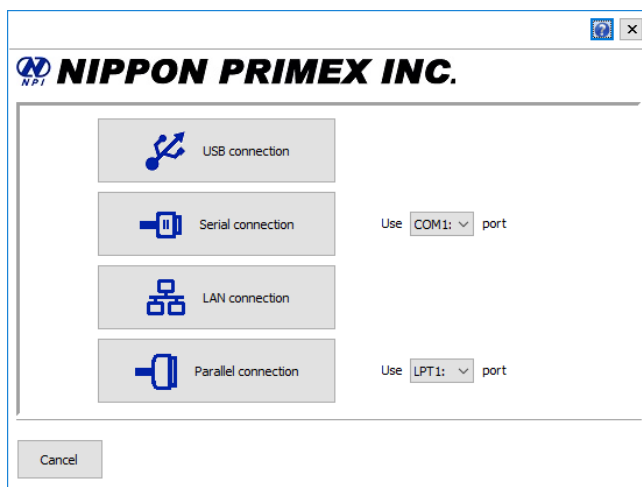
- To use Setup tool, you can install printer driver, NPrinterLib, and other printer information files.

Please connect the system to the printer by following procedure.

- 1) Power on the PC.
- 2) Power on the printer.
- 3) After a printer start-up is completed, connected the printer to the PC.
- 4) Extract the downloaded file.
- 5) Boot Setup tool.



- 6) When you agree to a software licensing contract, check "I agree to the contents of the licensing contract" and click the [NEXT] button.



- 7) Select each ports and click the interface button.

* For Serial or Parallel connection, please select each ports first and after that, click the interface button.

For USB, Serial and Parallel connection, it pop-ups as

"The installation of the driver is completed", when the set-up has been finished.

1. Installation procedure

8) In case of LAN connection, the window below is displayed.

Model Name	IP Address	Port No	MAC Address
NEX-M330	192.168.92.42	9100	0023A7C7E9F4
NEX-M330	192.168.92.70	9100	0023A7C7EA48
---	192.168.92.42	9100	---

IP Address

Port No

Model Name

MAC Address

Make

9) Double click the printer to connect and after that, click [Make] button.


When the set-up is completed, it pop up as “Installation of the driver is completed”.

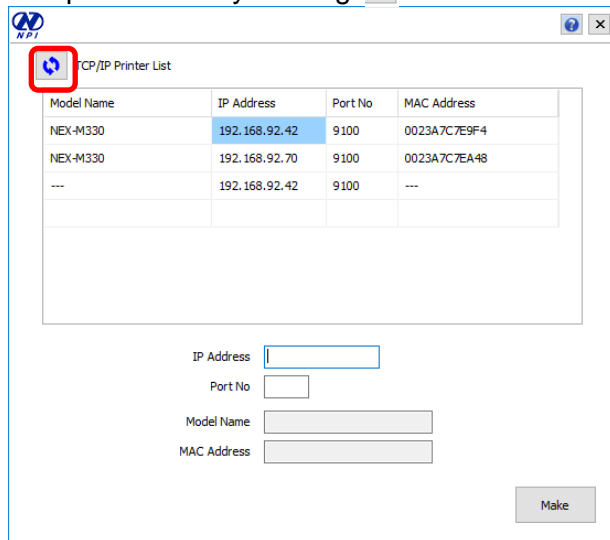
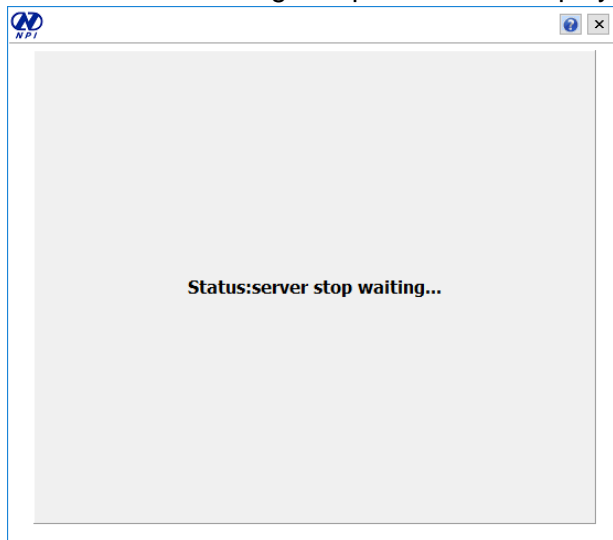
*When a printer to connect is not displayed, then, click  button, and update a list.

1. Installation procedure

8) In case of LAN connection, the window below left is displayed.

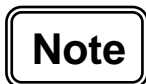
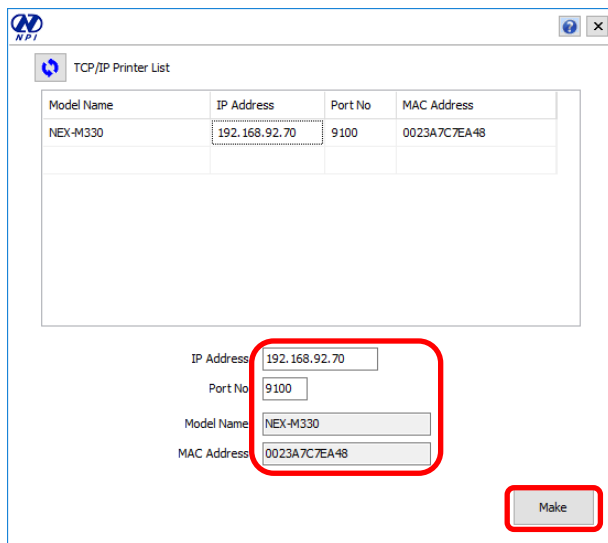
Please start [NServiceDrv] at [Management Tool] - [Service] so that the window below right can be displayed.


* When the targeted printer is not displayed, please update a list by clicking  button.



9) After double-clicking the printer to connect and entering each column on the bottom of the screen, please click [Make] button.

When the set-up is completed, a pop up with "Installation of the driver is completed" is displayed.



If the firewall permission screen is displayed and the list is not updated when clicking  button, please click it again.

2. Uninstallation procedure

• Uninstallation

- 1). Activate “NPI UnInstaller” in the folder by administrator.
- 2). Select the driver to delete and click [Target UnInstall].

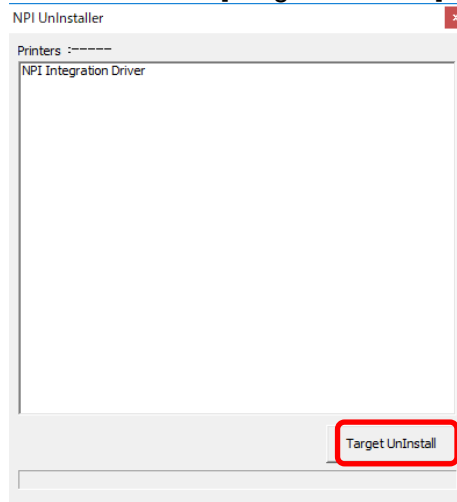


Fig.35.NPI Uninstaller

- 3). Please confirm that a letter of [Finish!!] was displayed.

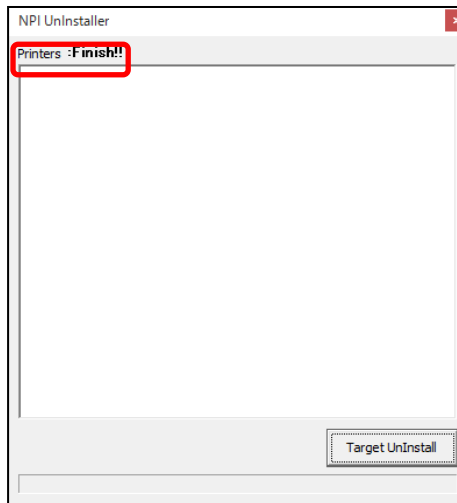


Fig.36.NPI Uninstaller

- 4). Reboot the PC.
Uninstallation is completed.

NOTE: A printer name may be left in Device and Printer, even after uninstallation.

You can not use it. Then, click the printer and execute [Deletion of the device].